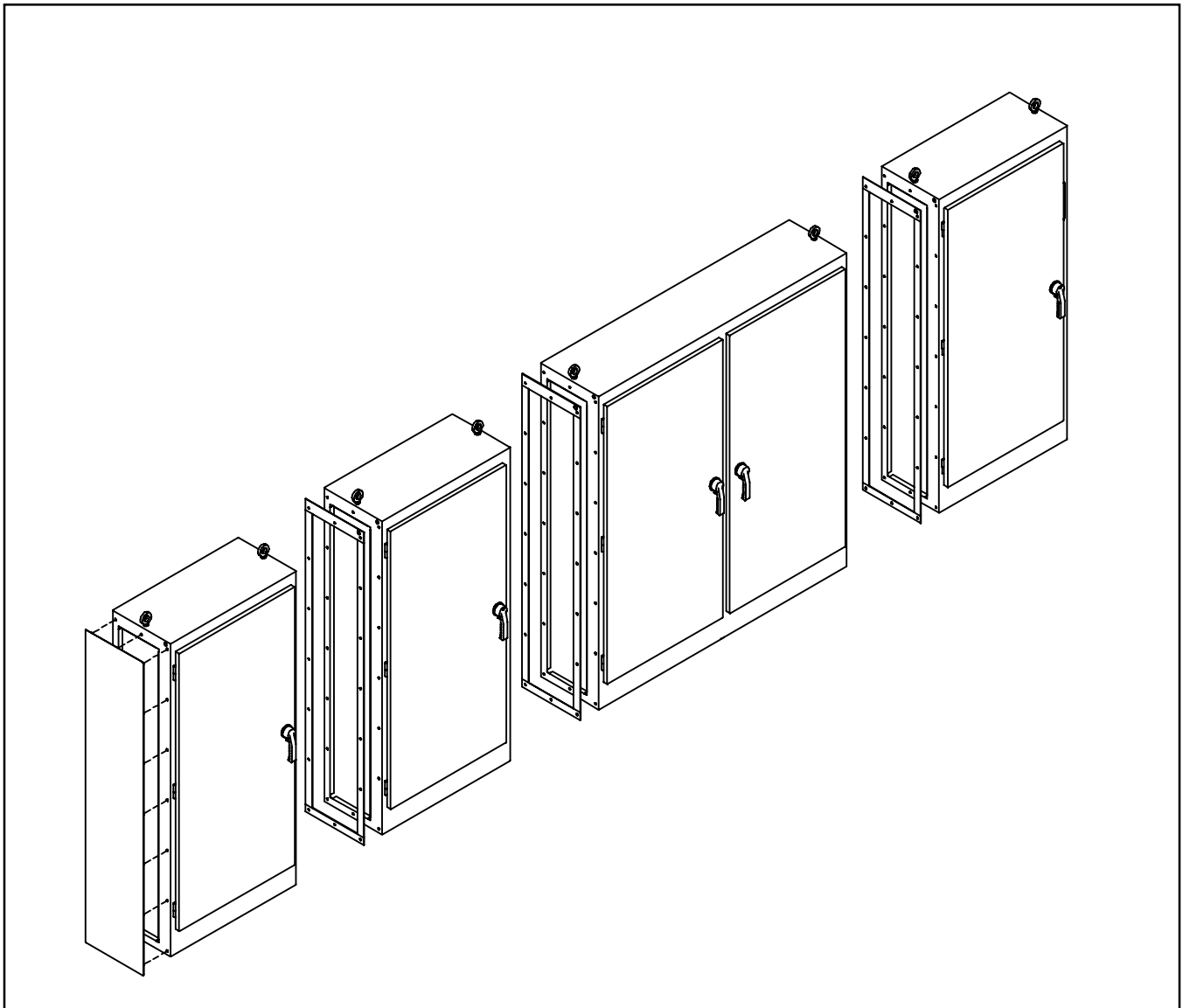
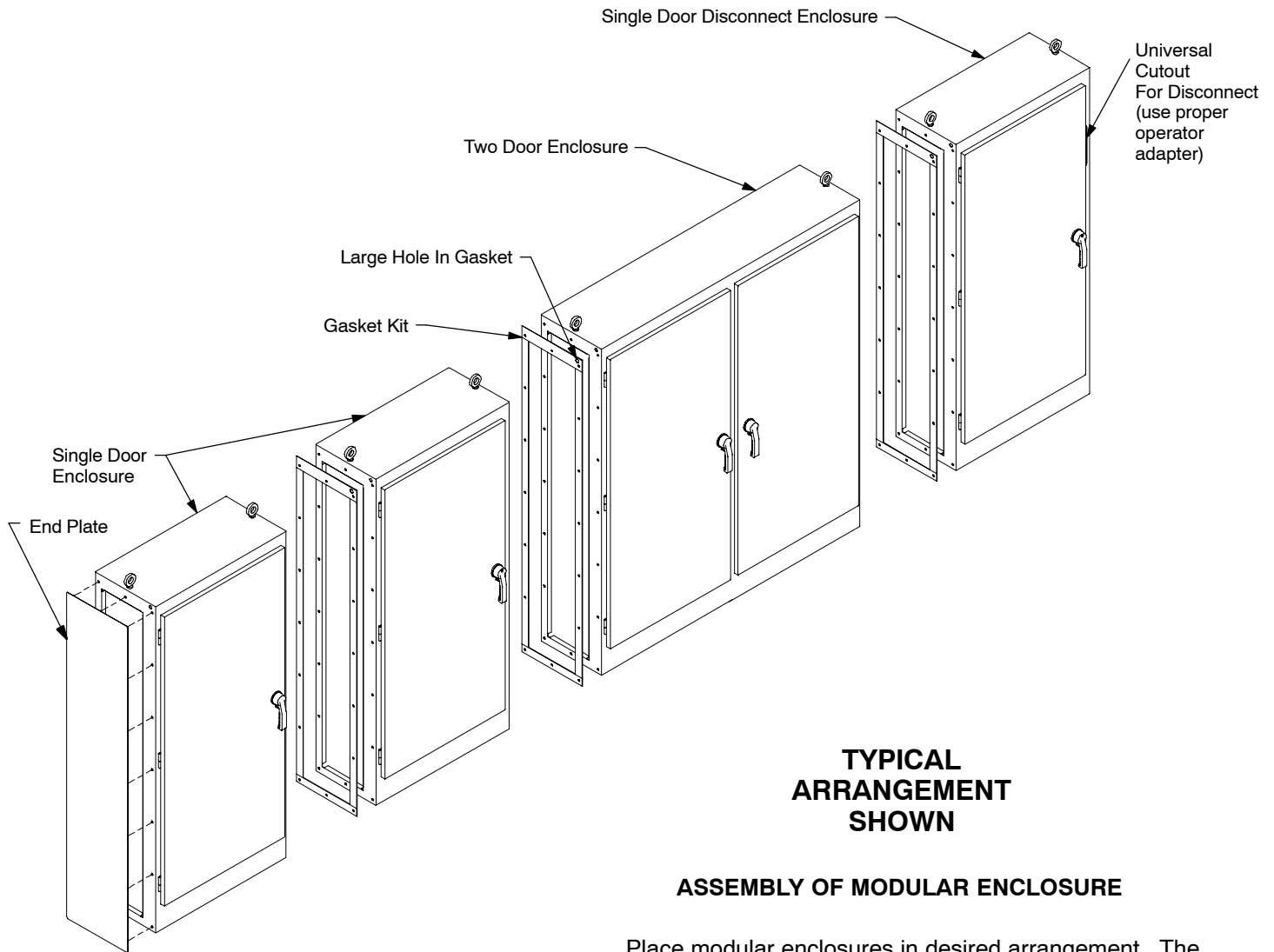


## Heavy-Duty Modular Enclosure



# ASSEMBLY OF MODULAR ENCLOSURE



## TYPICAL ARRANGEMENT SHOWN

### ASSEMBLY OF MODULAR ENCLOSURE

Place modular enclosures in desired arrangement. The master disconnect enclosure must be positioned at the far right side. This enclosure has provisions for a flange mounted disconnect on the right flange. Additional single door and two door modular enclosures can be arranged in any order. Enclosures are joined using a gasket kit. A flat end plate or end plate is then installed on the side of the far left enclosure in the assembly.

STEP 1: Position enclosures about 1/2 inch apart.

STEP 2: Install gasket between enclosures. Position gasket with three inch wide end at top and large hole in gasket positioned toward front of the enclosures.

STEP 3: Install screws through sides of enclosures and through gasket. Install lockwashers and nuts. Tighten nuts so gasket is compressed evenly between enclosures.

STEP 4: Position end plate on side of modular enclosure. (gasket is attached to end plate) Install screws through side of enclosure and the end plate. Install lockwashers and nuts. Tighten nuts so gasket is compressed evenly between enclosure and end plate.

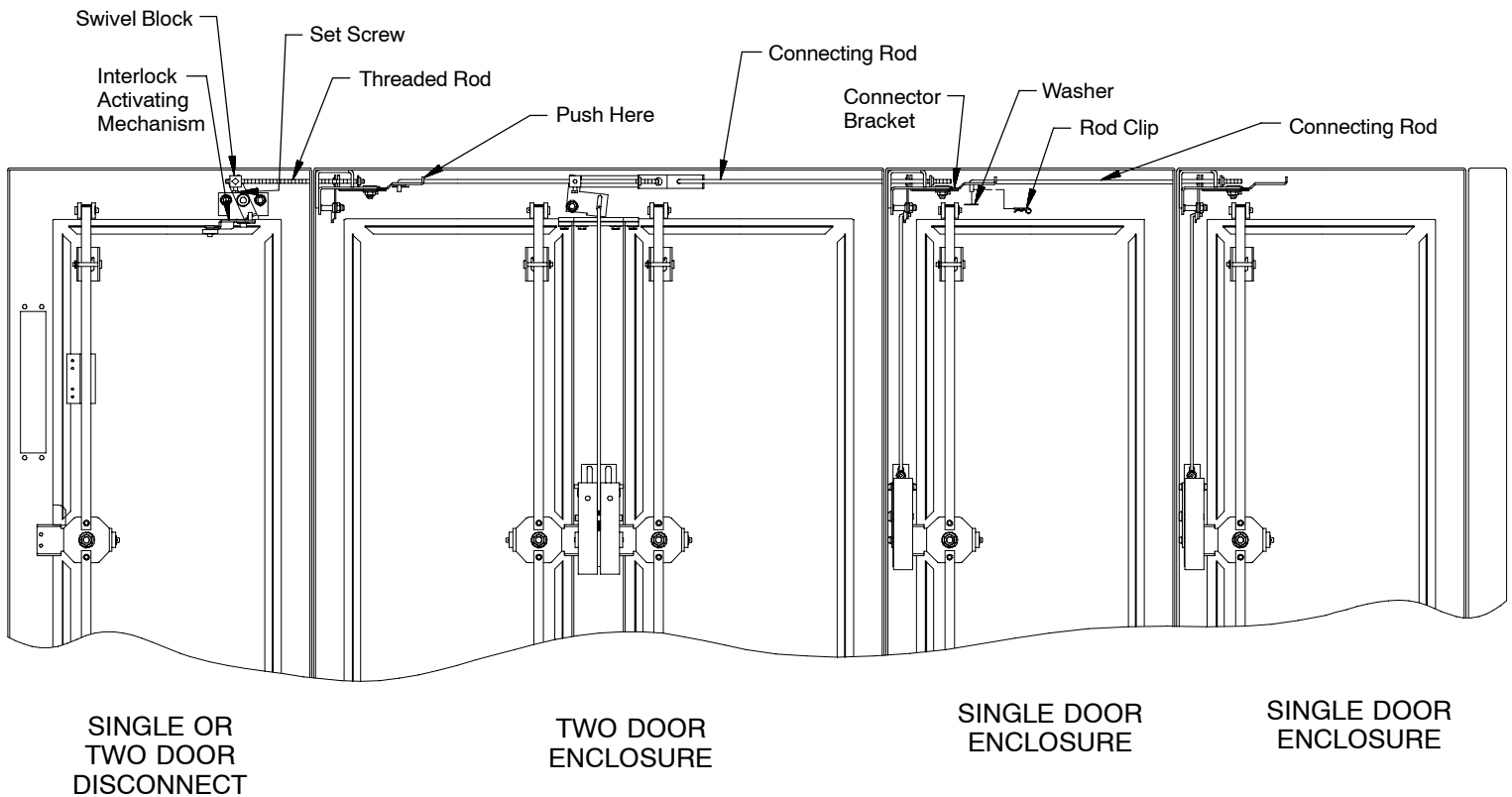
## WARNING

The functions, fits, and clearances of the installation described hereon are calculated from information supplied by the manufactures of the equipment to be installed. Be certain to check the function, fits, and clearances of all equipment both before and after installation to assure that it operates properly and safely and meets all applicable codes, standards, and regulations.

In the event the completed installation does not function properly or fails to meet any such codes, standards, or regulations, do not attempt to make alterations or operate the equipment. Report such facts immediately to:

Customer Service Dept.  
Hoffman Enclosures Inc.  
2100 Hoffman Way  
Anoka, MN 55303-1745  
(763) 422-2211  
www.hoffmanonline.com

# ASSEMBLY OF MECHANICAL INTERLOCK FOR MODULAR ENCLOSURES



**NOTE: View from inside enclosure.**

## ASSEMBLY OF MECHANICAL INTERLOCK FOR MODULAR ENCLOSURE

The master modular disconnect enclosure has an interlock activating mechanism above the master door. The single and two door modular enclosures include a connecting rod and rod clip. The connecting rod is installed between interlocks in adjoining enclosures. The interlock activating mechanism must be connected to the interlock inside a single door or two door modular enclosure. Follow step 1 and step 2 to connect the first interlock to the activating mechanism. Then follow step 3 and step 4 to connect additional interlocks.

### HOW TO CONNECT INTERLOCK ACTIVATING MECHANISM TO ADJOINING INTERLOCK

**STEP 1:** Above master door there is an interlock activating mechanism. Loosen set screw that holds the horizontal threaded rod in place. Slide threaded rod through the hole provided between enclosures. Thread end of this rod into connector bracket in the adjoining enclosure. Thread rod into connector bracket about ten full turns.

**STEP 2:** Close master door to activate interlock. Reach through open door of adjoining enclosure and push connector bracket toward activating mechanism until it stops. Also push swivel block on activating mechanism toward connector bracket until it stops. Hold connector bracket and swivel block in this position and tighten set screw. (see step 5 to check interlock operation)

**STEP 3:** Open door of adjoining enclosure. Remove connection rod, washer, and rod clip furnished with enclosure. Insert threaded end of connecting rod through the hole provided between enclosures. Thread the end of the rod into the connector bracket in the adjoining enclosure.

**STEP 4:** Close master door to activate the existing interlock in the other enclosures. Then pull formed end of connecting rod (installed in step 3) toward connector bracket. This pulls the interlock in the adjoining enclosure to the "locked" position. Continue to thread connecting rod into adjoining connector bracket until connecting rod is short enough to install formed end in other connector bracket. Captivate connecting rod with washer and rod clip. (see step 5 to check interlock operation)

**STEP 5:** Close and latch all doors in modular assembly. Attempt to open each slave door. The interlock system should prevent all slave door handles from being rotated. Then open master door to deactivate the interlock. Each slave door handle should now rotate so slave door can be opened. All doors can be closed in any order. Further adjustment may be required if the interlock does not operate in the manner described. Repeat adjustments in step 1 and step 4 if necessary.



A Pentair Company

**Hoffman Enclosures Inc.**

2100 Hoffman Way  
Anoka, MN 55303-1745  
(763) 422-2211  
[www.hoffmanonline.com](http://www.hoffmanonline.com)

**Pentair Electronic Packaging**

170 Commerce Drive  
Warwick, RI 02886  
(401) 732-3770  
[www.pentair-ep.com](http://www.pentair-ep.com)

**Mexico**

Pentair Enclosures, S. de R.L. de C.V.  
Federico T. de la Chica No. 8 Piso 4 A  
Circuito Comercial Plaza Satélite  
Ciudad Satélite,  
Naucalpan, México C.P. 53100  
011-52-55-5383-6263

**Canada**

Hoffman-Schroff  
111 Grangeway Avenue, Suite 504  
Scarborough, Ontario M1H 3E9  
(416) 289-2770  
1-800-668-2500 (Canada only)

**Germany**

Schroff GmbH  
Langenalber Str. 96-100  
75334 Straubenhardt  
49 (07082) 794-0 [www.schroff.de](http://www.schroff.de)

**Great Britain**

Schroff UK Ltd.  
Maylands Avenue  
Hemel Hempstead, Herts HP2 7DE  
44 (01442) 240471 [www.schroff.co.uk](http://www.schroff.co.uk)

**Sweden**

Schroff Scandinavia AB  
Box 2003  
12821 Skarpnäck  
46 08683 61 00 [www.schroff.se](http://www.schroff.se)

**France**

Schroff Sas  
Z.I., 4 rue du Marais  
67660 Betschdorf  
33 03 88 90 64 90 [www.schroff.fr](http://www.schroff.fr)

**Italy**

Schroff srl  
Viale Milano, 119  
21013 Gallarate (Varese)  
39 0331 79 40 03

**Singapore**

Hoffman-Schroff Pte. Ltd.  
#01-68/71 German Centre  
25 International Business Park  
Singapore 609916  
65 5 62-78 90

**Japan**

Schroff K.K.  
Nisso No. 13 Bldg. 4F  
2-5-1 Shinyokohama  
Kohoku-Ku, Yokohama shi  
Kanagawa 222-0033  
81 (045) 476-02 81

**Finland**

Schroff Scandinavia AB  
Peräsimentie 8  
03100 Nummela  
358 09 222 68 00

**Norway**

Schroff Scandinavia AB  
Bjoernerudveien 24  
1266 Oslo  
47 022 76 33 60